



COMPETENT PERSON'S REPORT

Client: *Confidential*

Duration: 8 Months

Project Team:



FIG 1: Bauxite ore



Paul Obermeyer
CP: MINERAL
RESOURCES



Armand v Wyngaardt
SNR MINING ENGINEER



George Olivier
CP: ORE RESERVES



Wendy Keiller
GEOLOGIST



Margariet Lumgair
PRINCIPAL
CONSULTANT



Wilhelm Warschkuhl
PRINCIPAL MINING
ENGINEER

CLIENT NEED

VBKOM was appointed to generate a JORC (2012) Code-Compliant Mineral Resources and Ore Reserves Competent Person's Report (CPR) for a bauxite concession located in the Republic of Guinea comprising:

- › Annual mining depletions, review and restatement of updated JORC (2012) Code-compliant Mineral Resources and Ore Reserves
- › Generation of a supporting JORC (2012) Code CPR
- › Competent Person's Review and sign-off on the Mineral Resources, Ore Reserves and CPR.

APPROACH

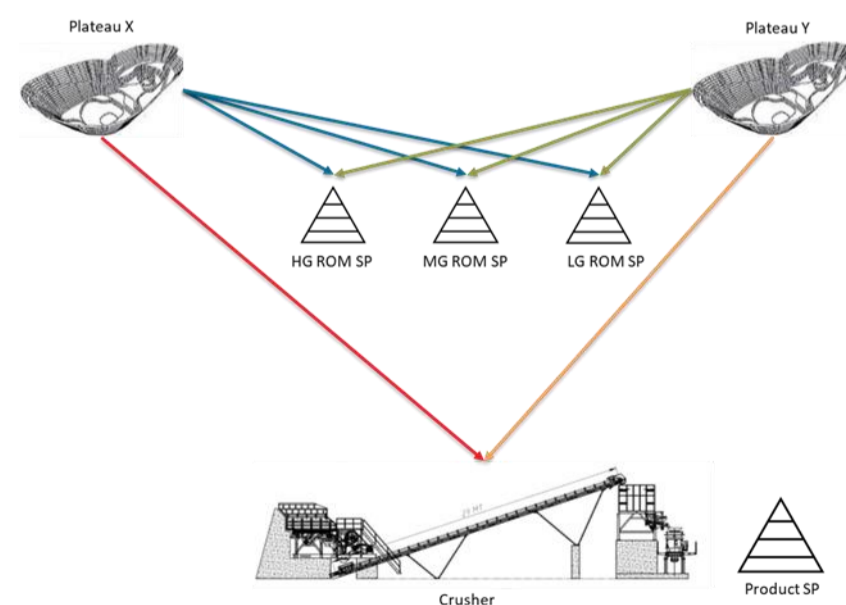
- › Mineral Resources Statement
 - Review all relevant blockmodels and previous Mineral Resource estimates
 - Conduct mining depletions utilising pit survey triangulations to present an updated Mineral Resource Statement relevant to the mining areas
 - Review and application of updated Mineral Resource cut-off grades where applicable
- › Ore Reserve Statement
 - Ore Reserve reported on a dry ROM basis in dry metric tonnes
 - Grades reported on in weighted percentage

VALUE DELIVERED AND RESULTS

- › Update LOM production schedule with reviewed and depleted Mineral Resource blockmodels
- › Restatement of updated JORC (2012) Code compliant Ore Reserves
- › Drafting of JORC (2012) Code Competent Person's Report (CPR)

RESERVING PROCESS

- › Determine cut-off grades based on in-situ ore
- › Estimate "Possible Ore" roof and floor based on cut-off grades
- › Determine cut-off grades based in diluted ore
- › Determine cut-off grades based on dilution and mining loss effected
- › Modify blockmodels by applying series of formulae in software
- › Surfaces created from final ore floor and pit designs for various mining areas
- › Life Of Mine Scheduling
- › Blending of Ore Material
- › Stockpile allocation
- › Declare Reserves



info@vbk.com

vbk.com

Centurion | Kathu