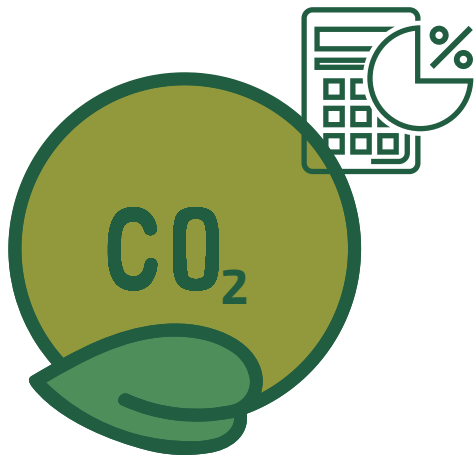


WHAT IS A CARBON CALCULATOR

www.vbkom.com



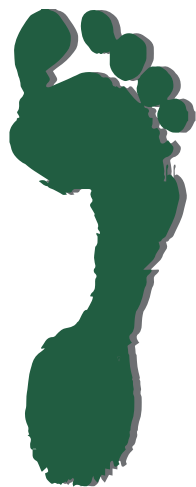
What is a Carbon Calculator?

It is a tool that is used to estimate the amount of CO₂ emissions and other noxious gases that are released into the atmosphere as a result of a particular activity or an organisation's operations.

The calculator uses data and algorithms to quantify the environmental impact of factors such as Energy Usage, Consumption Habits, Travel and Infrastructure.

Carbon Calculation Considerations

A carbon calculator takes into consideration a range of factors that contribute to greenhouse gas emissions. These factors can vary depending on whether the calculator is designed for individuals, businesses, or specific activities.



Mining Activity Considerations:

1. Energy Consumption
2. Transportation
3. Fuel Consumption
4. Infrastructure
5. Waste Generation and Disposal
6. Fugitive Gas Emission
7. Water Usage
8. Offsets and Mitigation Efforts
9. Location and Regional Factors
10. Travel and Commuting



Reasons to use a Carbon Calculator:

1. Environmental Awareness and Responsibility
2. Setting Reduction Goals
3. Tracking Progress
4. Informed Decision-making
5. Risk Management
6. Accurate Emissions Calculation for compliance and reporting purposes

Direct and Indirect Emissions

Direct and indirect emissions are two categories used in a carbon calculator to differentiate between emissions that occur as a direct result of an activity and those that are associated with the broader supply chain or supporting infrastructure of that activity.

Direct Emissions (Scope 1):

These are emissions that occur from sources that are owned or directly controlled by the entity being assessed.

Indirect Emissions (Scope 2):

These are emissions associated with the generation of the electricity, heat, or steam that a company or individual procures and consumes.

Indirect Emissions (Scope 3):

These are a broader category of indirect emissions that occur along the entire supply chain or lifecycle of products or services used by a company or individual.

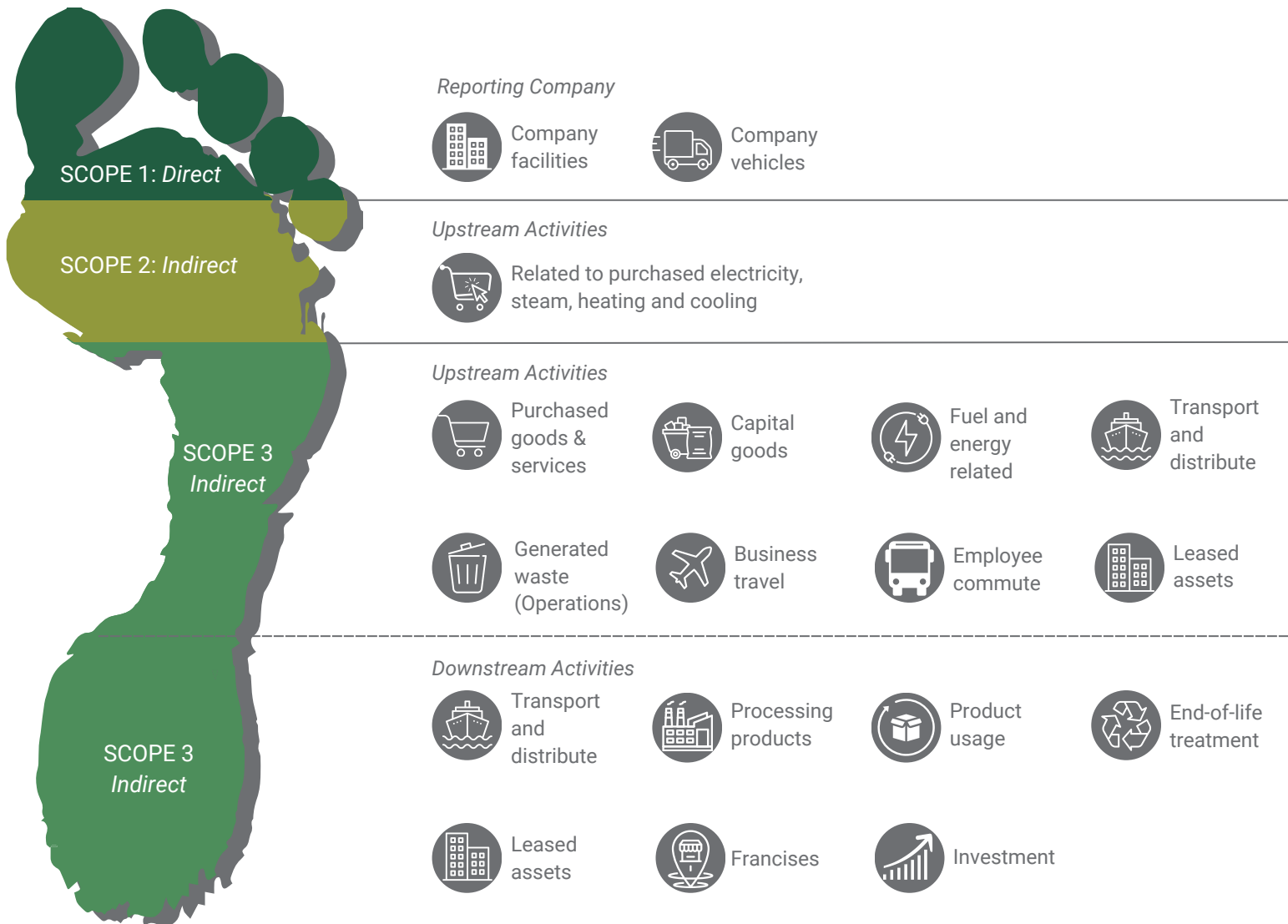
CONSIDERATIONS

www.vbkom.com



A carbon footprint refers to the total amount of greenhouse gases, carbon dioxide (CO₂), and other noxious gases that are emitted directly or indirectly by an individual, organisation, event, product, or activity over its life cycle, expressed tonne CO₂ equivalent.

Carbon Calculation Considerations based on Direct and Indirect emissions

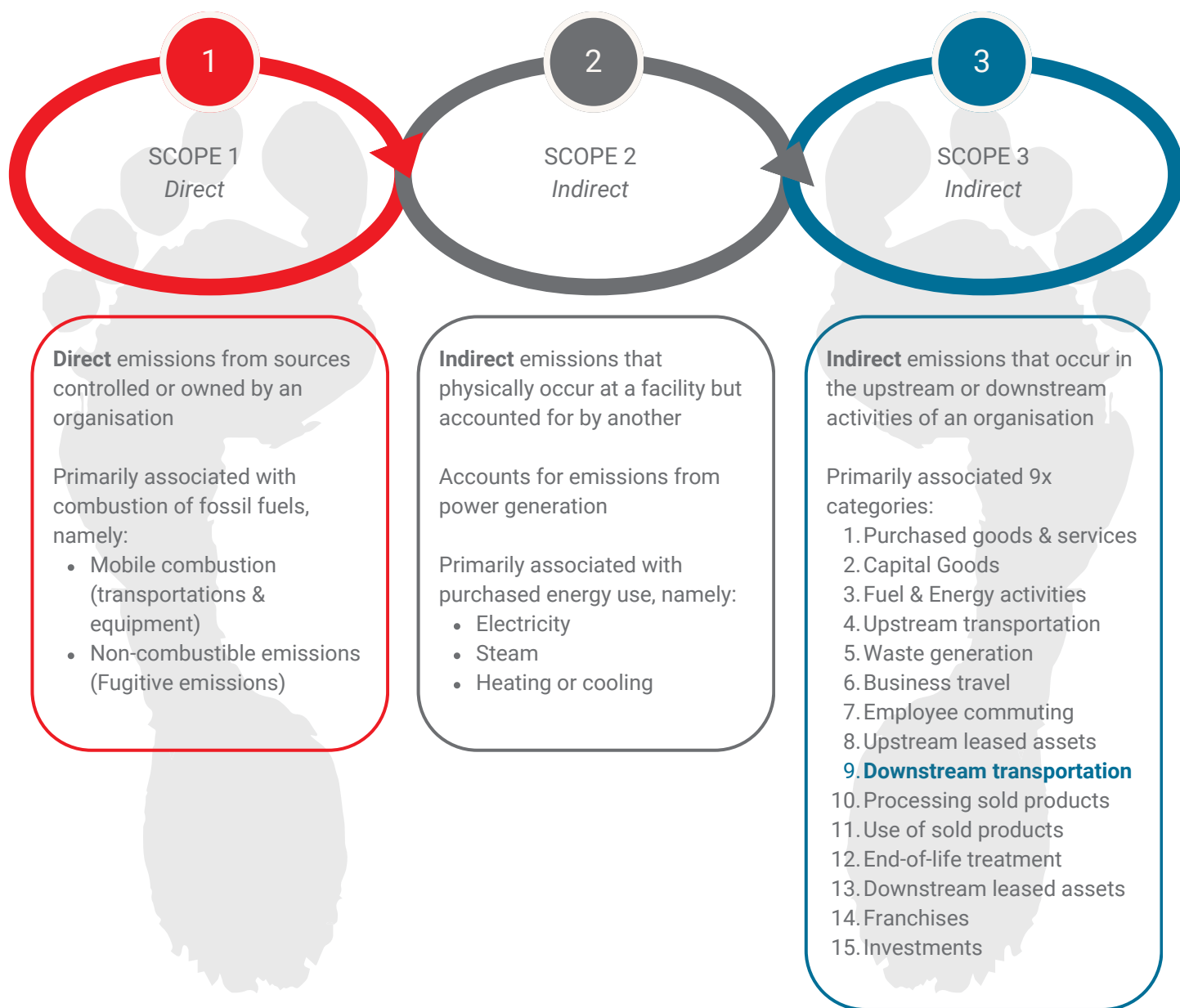


VBKOM's CARBON CALCULATOR

www.vbkom.com



VBKOM developed a carbon calculator tailored to estimate emissions from mining activities for any mining commodity. VBKOM's calculator is built to account for Scope 1, Scope 2, Category 9 under Scope 3, and can accommodate any other relevant categories.



Unearth the opportunities by partnering with VBKOM.

Sources:

<https://www.globenewswire.com/>

<https://www.iea.org/>

<https://ghgprotocol.org/>

April 2024

